

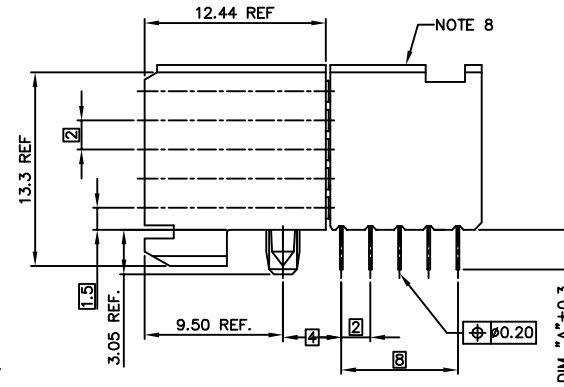
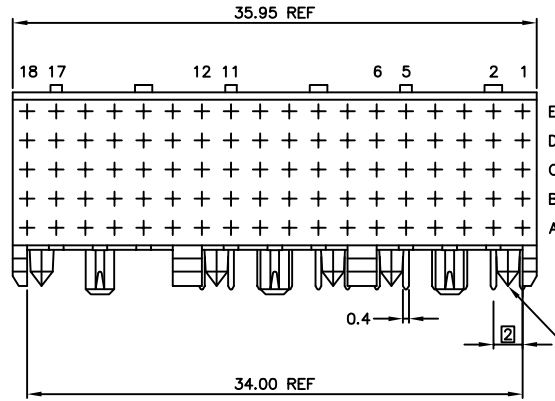
Tous droits strictement reserves. Reproduction ou communication a des tiers interdite sous quelque forme que ce soit sans autorisation écrite du propriétaire. Propriete de c FCI. Droits de reproduction FCI.



All rights strictly reserved. Reproduction or issue to third parties in any form whatever is not permitted without written authority from the proprietor. Property of FCI. Copyright FCI.

PRODUCT NUMBER	ASSY. STYLE	BOARD ATTACHMENT	TAIL TERMINATION	TAIL LGTH. DIM "A"	PCB THICKNESS	NOTES
SEE TABLE SH. 3	1	PRESS-PEG	SOLDER-TO-BOARD	2.90mm	1.6mm	NOTE 7
	1	PRESS-PEG	SOLDER-TO-BOARD	3.53mm	2.4mm	NOTE 7
	2	HEAT-STAKE	SOLDER-TO-BOARD	2.90mm	1.6mm	
	2	HEAT-STAKE	SOLDER-TO-BOARD	3.53mm	2.4mm	
	3	PRESS-PEG	PRESS-FIT	2.90mm	1.6mm	NOTE 7
	3	PRESS-PEG	PRESS-FIT	3.53mm	2.4mm	NOTE 7

PRODUCT NR:	PLATING CONTACT AREA:	UNDERPLATING
73950-1YYY	0.8 μm GOLD	1.3 μm Ni MIN.
73950-2YYY	2 μm GOLD	1.3 μm Ni MIN.
73950-9YYY	0.8 μm GXT	1.3 μm Ni MIN.
73950-1YYLF	0.8 μm GOLD	1.3 μm Ni MIN.
73950-2YYLF	2 μm GOLD	1.3 μm Ni MIN.
73950-9YYLF	0.8 μm GXT	1.3 μm Ni MIN.



ASSY. STYLE 1

mat'l. code SEE NOTES				tolerances unless otherwise specified		CUSTOMER COPY	FCI www.fciconnect.com		
ltr	ecn no	dr	date	linear	.X ±.3	projection	title		
F	V11694	LSS	6/15/01		.XX ±.10		R/A SIGNAL HYBRID		
G	V03-0540	LP	5/14/03		.XXX ±.050		RECEPTACLE - 36MM		
H	V03-0722	LP	8/21/03	angles	0° ±2'		product family METRAL (tm)		
J	V05-1012	JRV	11/3/05	dr	M.FETROW 7/2/97		size	dwg no	code
K	DC08-0171	TER	9/6/08	enr	C.PENDLETON 7/2/97		MM		213
				chr	C.PENDLETON 7/2/97	scale	A 73950		
				appd	C.PENDLETON 7/2/97	1:1	sheet 1 of 3		
sheet index	revision sheet	K	K	K					
		1	2	3					



www.fciconnect.com

R/A SIGNAL HYBRID RECEPTACLE - 36MM

product family METRAL (tm) size dwg no code 213

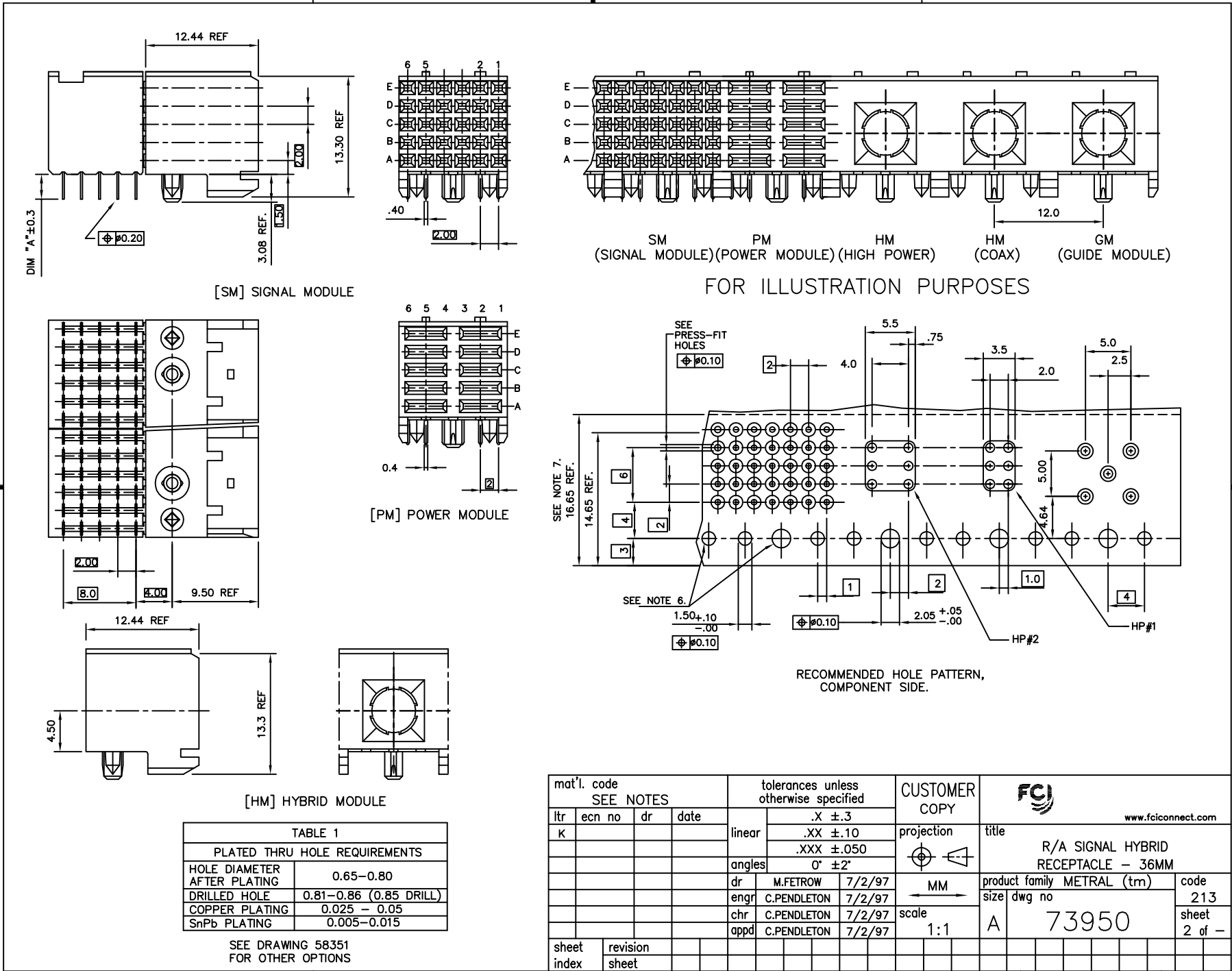
A 73950 sheet 1 of 3

cage code 22526



All rights strictly reserved. Reproduction or issue to third parties in any form whatever is not permitted without written authority from the proprietor. Property of FCI. Copyright FCI.

Tous droits strictement réservés. Reproduction ou communication a des tiers interdite sous quelques forme que ce soit sans autorisation écrite du propriétaire. Propriété de c FCI. Droits de reproduction FCI.



mat'l. code SEE NOTES				tolerances unless otherwise specified		CUSTOMER COPY	FCI www.fciconnect.com	
ltr	ecn no	dr	date	linear	.X ±.3 .XX ±.10 .XXX ±.050	projection	title	
K				angles	0° ±2'	MM	R/A SIGNAL HYBRID RECEPTACLE - 36MM	
				dr	M.FETROW 7/2/97	scale	product family	code
				enr	C.PENDLETON 7/2/97	1:1	METRAL (tm)	213
				chr	C.PENDLETON 7/2/97		size	sheet
				appd	C.PENDLETON 7/2/97		dwg no	2 of -
sheet index	revision sheet						cage code	
							22526	

Tous droits strictement réservés. Reproduction ou communication a des tiers interdite sous quelque forme que ce soit sans autorisation écrite du propriétaire. Propriété de c FCI. Droits de reproduction FCI.



All rights strictly reserved. Reproduction or issue to third parties in any form whatever is not permitted without written authority from the proprietor. Property of FCI. Copyright FCI.

PRODUCT NO	ASS'Y TYPE	TAIL LENGTH	ROW	1 2					3					4				
				18	17	16	15	14	13	12	11	10	9	8	7	6	5	4
73950-X001 SEE NOTE 11 FOR LEAD FREE OPTIONS	1	3.53	E						X X X X X X					X X X X X X				
			D						X X X X X X					X X X X X X				
			C						X X X X X X					X X X X X X				
			B						X X X X X X					X X X X X X				
			A						X X X X X X					X X X X X X				
MODULE TYPE				HM					PM					PM.				
73950-X002 SEE NOTE 11 FOR LEAD FREE OPTIONS	1	3.53	E	X X X X X X					X X X X X X					X X X X X X				
			D	X X X X X X					X X X X X X					X X X X X X				
			C	X X X X X X					X X X X X X					X X X X X X				
			B	X X X X X X					X X X X X X					X X X X X X				
			A	X X X X X X					X X X X X X					X X X X X X				
MODULE TYPE				PM					SM					SM				
73950-X003 SEE NOTE 11 FOR LEAD FREE OPTIONS	3	3.53	E	X X X X X X					X X X X X X					X X X X X X				
			D	X X X X X X					X X X X X X					X X X X X X				
			C	X X X X X X					X X X X X X					X X X X X X				
			B	X X X X X X					X X X X X X					X X X X X X				
			A	X X X X X X					X X X X X X					X X X X X X				
MODULE TYPE				SM					SM					SM				
73950-X004 SEE NOTE 11 FOR LEAD FREE OPTIONS	3	2.90	E	- X - X - X					X X X X X X					- X - X - X				
			D	- - - - -					X X X X X X					- - - - -				
			C	- X - X - X					X X X X X X					- X - X - X				
			B	- - - - -					X X X X X X					- - - - -				
			A	- X - X - X					X X X X X X					- X - X - X				
MODULE TYPE				SM					SM					SM				
73950-X005 SEE NOTE 11 FOR LEAD FREE OPTIONS	3	2.90	E	X X X X X X										X X X X X X				
			D	X X X X X X										X X X X X X				
			C	X X X X X X										X X X X X X				
			B	X X X X X X										X X X X X X				
			A	X X X X X X										X X X X X X				
MODULE TYPE				PM					HM					PM.				
73950-X006 SEE NOTE 11 FOR LEAD FREE OPTIONS	3	2.90	E	X X X X X X					X X X X X X					X X X X X X				
			D	X X X X X X					X X X X X X					X X X X X X				
			C	X X X X X X					X X X X X X					X X X X X X				
			B	X X X X X X					X X X X X X					X X X X X X				
			A	X X X X X X					X X X X X X					X X X X X X				
MODULE TYPE				PM					SM					PM				

OBSOLETE

NOTES:

- CONNECTOR MATERIALS:
HOUSING: LCP, 30% GLASS FILLED,
UL 94-V0 COMPLIANT
TERMINAL: PHOSPHOR BRONZE ALLOY
- PLATING ON TAIL:
PRESS-FIT TYPE
73950-XYX IS 0.5-1.5um SnPb
73950-XYLF IS 0.5-1.5um Sn (LEAD FREE)
SOLDER-TO-BOARD TYPE
73950-XYX IS 2-8um SnPb
73950-XYLF IS 2-8um Sn (LEAD FREE)
- PRODUCT SPECIFICATION:
GS-12-002
- APPLICATION SPECIFICATIONS:
BUS-20-061
GS-20-001
TA-941
- PRODUCT MARKING: (PART NUMBER & LOT CODE).
- INDICATED HOLES ARE UNPLATED.
- LOCATION PEG FEATURES MAY NOT BE AVAILABLE AS SHOWN FOR ASSYS W/ PRESS PEGS.
- TOP SURFACE OF PRESS BLOCK MAY EXTEND UP TO 0.4MM HIGHER THAN HOUSING. THIS MAY AFFECT THE TAIL LENGTH BEFORE APPLICATION TO A BOARD.
- DIMENSION APPLIES TO BOTH PRESS-FIT AND SOLDER TAIL TERMINATIONS.
- THESE PRODUCTS WHERE THE PART NUMBER ENDS IN "LF" MEET THE EUROPEAN UNION DIRECTIVES AND OTHER COUNTRY REGULATIONS AS DESCRIBED IN GS-22-008.

ALL PRODUCTS MANUFACTURED BEFORE APRIL 2006 WILL WITHSTAND EXPOSURE TO 240°C FOR 60 SECONDS IN A CONVECTION, INFAR-RED OR VAPOR PHASE REFLOW OVEN.

ALL PRODUCTS MANUFACTURED AFTER MARCH 2006 WILL WITHSTAND EXPOSURE TO 260°C FOR 60 SECONDS IN A CONVECTION, INFAR-RED OR VAPOR PHASE REFLOW OVEN.
- FOR LEAD FREE PART NUMBERS ADD "LF" SUFFIX. EXAMPLE: 73950-XYXYLF.

LOAD PATTERN	
X	LOADED
-	NOT LOADED
HP#1	PWR. CONN .LOADED

mat'l. code SEE NOTES				tolerances unless otherwise specified				CUSTOMER COPY		FCI www.fciconnect.com	
ltr	ecn no	dr	date	linear	.X ±.3			projection	title		
K					.XX ±.10				R/A SIGNAL HYBRID		
				angles	.XXX ±.050				RECEPTACLE - 36MM		
					0° ±2'				product family METRAL (tm)		
				dr	M.FETROW	7/2/97	← MM →	scale	product family METRAL (tm)		code
				enr	C.PENDLETON	7/2/97			size dwg no		213
				chr	C.PENDLETON	7/2/97			A		73950
				appd	C.PENDLETON	7/2/97	1:1				3 of -
sheet index	revision sheet										

cage code
22526